

# 2690 HIGHWAY 42

LOCUST GROVE, GA 30248

\$ | 3 BEDS |

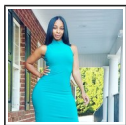


View Online: <http://www.viewlisting.info/118665>

For Instant Photos: Text 413478 To 415-877-1411

PRIME LOCATION!!! TOTAL 23.25 ACRES AS THIS PROPERTY IS BEING SOLD COLLECTIVELY/TOGETHER WITH 3 OTHER PARCELS (GAMLS#'s; 10240603, 10240607, DRF1264347). PAD READY / SITS RIGHT OFF OF I-75 / EASY PORTS ACCESS & MORE. IDEAL FRONTAGE SITS ON SR 23/HIGHWAY 42, AMONGST TOP, NEW INDUSTRIALIZED BUSINESSES; KOREAS 1ST IN GA, "NVH USA," "ANDERSON CORPORATION" AMERICAS PREMIER WINDOW & THE LARGEST IN NORTH AMERICA-DOOR MANUFACTURER (ITS 1ST IN GA," & LAST BUT NOT LEAST, "NEW COLD" CHAIN LOGISTICS, HENRY COUNTIES SINGLE LARGEST INVESTMENT TO DATE. COME AND SEE IF YOUR VISION SITS HERE TOO.

- ZONED: M-1
- 23.25 ACRES
- 646ft ROAD FRONTAGE
- INTERCHANGE COMING SOON
- ALL UTILITIES AVAILABLE TO/ON SITE
- EASY DISTRIBUTION
- LAND USE TABLE ATTACHED
- 30k +/- Cars Per Day



## AGENT INFORMATION

**Cassandra Calixte**

P: 678.304.9719

M: 6783049719

License # 390410

[ccalixte@fathomrealty.com](mailto:ccalixte@fathomrealty.com)

<https://remine.com/re/cassandrascalixte>

**CALIXTE Estate | RESIDENTIAL | COMMERCIAL**

PO BOX 278, 4050 HIGHWAY 42  
LOCUST GROVE, GA 30248-9998

## ABOUT CASSANDRA CALIXTE

Greetings and thanks for stopping by!

Meet creative, real estate expert, Cassandra Calixte, Owner of CALIXTE Estate, a Residential | Commercial Real Estate Company, whose passion lies in catering to the unique and creative needs of their esteemed clients who are seeking to lease, buy, sell, or invest in real estate.



□

□

Disclaimer: All information deemed reliable but not guaranteed.