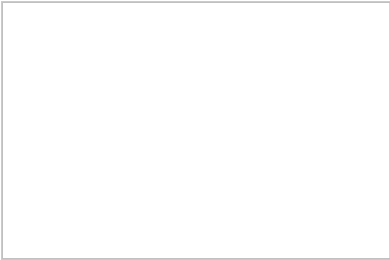
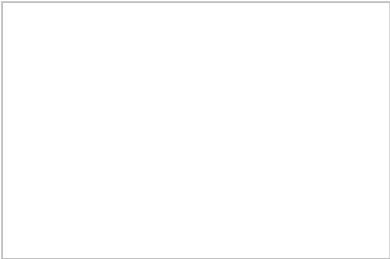


N4553 ELM VALLEY RD

WAUPACA, WI 54981 | MLS #: 50132047

\$198,000 | 3 BEDS | 2.5 BATHROOMS | 4+ CAR GARAGE | 1940 SQUARE FEET



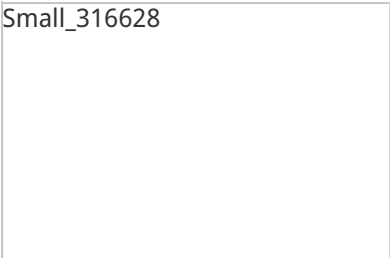
View Online: <http://www.mysinglepropertywebsites.com/46356>

For Instant Photos: Text 199374 To 415-877-1411

Beautiful setting for this ranch style home on 5 acres. Circular driveway leading up to this spacious home with almost 2000 square feet of living space. 3 nice size bedrooms and 2.5 baths. Convenient first floor laundry. Kitchen offers patio doors to great view of the property. Attached 2 car garage PLUS detached 4+ car garage/shop.

HUD Case #581-356731. HUD homes are sold AS IS. Call listing office with questions. Visit www.mmrem.com for more information

To view all HUD owned properties visit www.HUDHomestore.com



- Spacious ranch home
- 5 acres
- Attached and detached garages
- First floor laundry
- 3 beds, 2.5 baths
- Patio doors
- Multiple fireplaces



AGENT INFORMATION

ABOUT ANDY BOEHM

Andy Boehm
P: 920-915-6760
M: 920-915-6760
License # 72749
andy@scorerealtygroup.com
www.ScoreRealtyGroup.com

Score Realty Group, LLC
2190 American Drive
Neenah, WI 54956



Disclaimer: All information deemed reliable but not guaranteed.