

1911 E 36TH AVE

APACHE JUNCTION, AZ 85119 | MLS #: 5316996

\$135,000 | 2 BEDS | 2 BATHROOMS | 1,285 SQUARE FEET

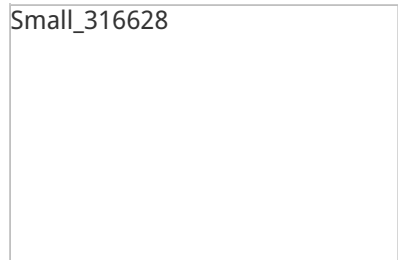


View Online: <http://www.mysinglepropertywebsites.com/43859>

For Instant Photos: Text 645474 To 415-877-1411

This is the house of your dreams! Single level 2 Bedroom + Den*Den could be used as formal dining*North/South exposure! Open Floor Plan Perfect For Entertaining! Kitchen offers a pantry, built in microwave, breakfast bar, neutral tile, track lighting, smooth top stove*Upgraded Fans T/O*Fresh neutral interior paint*Spacious bedrooms*Lots of picture windows throughout bringing in plenty of natural sunlight*HUGE Family room open to the kitchen*Spacious master bedroom with large walk in closet*RV gate and parking so you have plenty of room for your toys! Stone accents on front give it beautiful curb appeal*Close to schools freeway access, parks, basketball court, greenbelts, shopping, and restaurants*Minutes from Canyon Lake! Tomahawk Subdivision conveniently located near 60 and loop 202!

Small_316628



- COVERED PATIO
- CEILING FANS
- BREAKFAST BAR
- LARGE BACKYARD
- MOVE IN READY
- CERAMIC TILE FLOOR
- PLUSH NEUTRAL CARPET
- CLOSE TO CANYON LAKE



AGENT INFORMATION

Angela & Chris Patten

M: (480) 577-4830

Angie@ThePattenTeam.com

ThePattenTeam.com

Keller Williams Realty East Valley

2077 E Warner Road #110

Tempe, AZ 85284



Disclaimer: All information deemed reliable but not guaranteed.