

# 40716 N BELL MEADOW TRL

PHOENIX, AZ 85086 | MLS #: 5289636

\$ | 5 BEDS | 4.5 BATHROOMS | 3556 SQUARE FEET

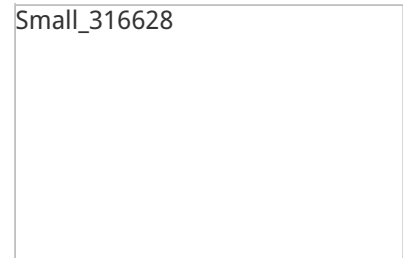


View Online: <http://40716bellmeadow.homeis4sale.com>

For Instant Photos: Text 665556 To 415-877-1411

The Complete Package, vacant and ready!!! This perfectly appointed Somona model perfect for entertaining truly has it ALL!! 5BR-2 Living-Library/Study, Formal Dining-4.5BA; including an adjoining Casita (great for guests or a private office) is genuinely the BEST DEAL in Anthem Country Club! It is one of the few homes in Anthem Country Club available with a Casita, a Pool AND Private Courtyard with pavers. The home features two gas fire pits; one in the front private courtyard and one in the back near the pool. This home is positioned on a very private wash with mountain views to see our Spectacular Arizona sunsets. There are numerous Upgrades throughout this home. Outside features a pool with rock waterfall, Cool deck and colored LED lighting, an extended patio, built-in Gas BBQ, rain gutters and professional landscaping. Some of the inside features are surround sound, central vacuum cleaner, soft water system, GE Monogram upgraded stainless steel appliances, granite counters, cherry cabinets, 6 burner gas range with warmer above the burners plus a separate warming drawer, Butler's pantry with a wet bar and wine fridge area, 2 Bedrooms feature a Jack-n-Jill bathroom, and one secondary bedroom has an en-suite bath, diagonal tile throughout (No carpet), upgraded light fixtures. Spacious master suite with a private exit, walk in closet and luxurious spa like bath w/soaking tub, separate shower and dual sink vanity! Exterior of home just painted May 2015. Schedule your privat...

Small\_316628



- MOUNTAIN VIEWS
- COZY FIREPLACE
- BUILT IN BBQ
- KITCHEN ISLAND
- NORTH/SOUTH EXPOSURE
- SPARKLING POOL
- FIREPIT
- GRANITE COUNTERTOPS



## AGENT INFORMATION

**Brenda Miertschin**

P: (602) 553-4400

M: (602) 617-4460

[bmiertschin@gmail.com](mailto:bmiertschin@gmail.com)

[www.BrendaMiertschin.com](http://www.BrendaMiertschin.com)



**Keller Williams Realty Biltmore Partners**

2920 E. Camelback Rd. # 100  
Phoenix, AZ 85016

□

□

Disclaimer: All information deemed reliable but not guaranteed.