

5035 SW 26TH DRIVE

PORTLAND, OR 97239

\$350,000 | 3 BEDS | 1 BATHROOMS | 2 GARAGE | 1,224 SQUARE FEET

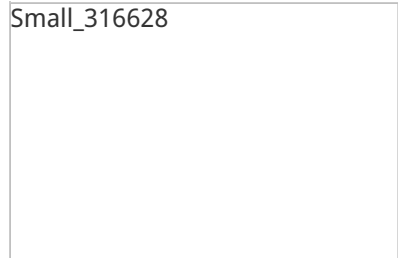


View Online: <http://5035se26thdrive.homeis4sale.com>

For Instant Photos: Text 561373 To 415-877-1411

Stellar Hillsdale ranch on private, oversized lot; mid-century character abounds with a completely updated kitchen, incl all new appliances, double oven, granite countertops & brand new cabinets. Hand crafted stacked stone fireplace, 3 bdrm, 1 bath, brand new super efficient ductless heat pump, updated electrical wiring & plumbing; 2 car garage; fresh exterior paint.

Small_316628



- Private, oversized lot
- Recently remodeled kitchen
- New appliances
- Fresh exterior paint



AGENT INFORMATION

David and Kristen
P: 971.303.5441
M: 971.303.5441
fsbo@camaskerns.com

FINANCING QUESTIONS:

Greg Long
P: 800.364.4496
M: 970.846.3344
License # NMLS 239857
greg.long@wvbk.com

□

□

Disclaimer: All information deemed reliable but not guaranteed.