

1020 COUNTRY PLACE RD

WEATHERFORD, TX 76087 | MLS #: 14169334

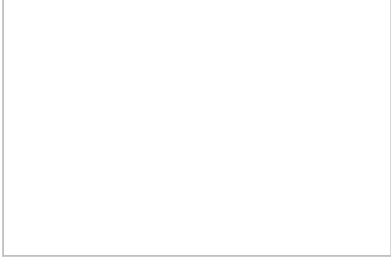
\$1,600,000 | 5 BEDS | 4 BATHROOMS | 6 CAR PARKING | 5090 SQUARE FEET



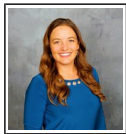
View Online: <http://www.viewlisting.info/84165>
For Instant Photos: Text 893736 To 415-877-1411



Well-Designed Ranch with Details and Character! Over 5000+ sqft Luxury Home with amazing views. Immense Master Suite with 12' Ceilings, Balcony and Office. 2 Dinning Areas, 3 Fireplaces and Spacious Living Room with Covered Porch access. Expansive 5000+ sqft Shop divided into 3 working areas with a Car Paint Booth, Car Lift and Ample Storage. Separate 1200+ sqft Building for Guest Quarters or Private Gym/Office with Central Heat/Air, Bathroom & Laundry Hookups. Additional Tiny House Guest Quarters. 2 complete RV hookups, 7 Pastures with Water, Round Pen, Arena, Tack Room, & Equipment Shed. Outdoor Kitchen, Dog Kennels & 2 Wells. 2 Separate Gated Entrances on 3 parcels totaling 12.5 Acres in Coveted Brock ISD.



- 12.5 Acres in Brock ISD
- 5000 sqft Workshop with Concrete Floor, Electricity and Water
- 1200+ Workshop with Half Bath, AC/Heat, and Washer/Dryer Connections
- Arena
- Round Pen
- Stock Tank with Water Fall



AGENT INFORMATION

Katy Preston
P: 8178191180
License # 712707
kpreston@fathomrealty.com
katypreston.fathomrealty.com



Fathom Realty

ABOUT KATY PRESTON

Texas Real Estate Agent Serving Buyers, Sellers, and Investors.
Fathom Realty
Website- katypreston.fathomrealty.com
817-819-1180
E-mail kpreston@fathomrealty.com

□ □

Disclaimer: All information deemed reliable but not guaranteed.