

630 HIGHGATE COURT

WEST CHICAGO, IL 60185 | MLS #: 09975010

\$329,900 | 4 BEDS | 2.5 BATHROOMS | 2 CAR GARAGE | 2458 SQUARE FEET



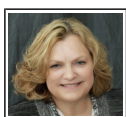
View Online: <http://630highgatect.homeis4sale.com>
For Instant Photos: Text 421574 To 415-877-1411



New Price!!! Now \$329,900! Stroll, run or bike the Prairie Path and Forest Preserve from this quality Airhart built beauty located on a cul de sac. A main level den/office offers wall of windows with vaulted ceiling. The kitchen features white cabinetry, granite countertops, an island and table space. The adjacent pantry/mudroom has laundry hook up. The light & bright family room has a fireplace and overlooks the party size deck & generous backyard. A cozy living room & formal dining room complete the main level. Upstairs the master suite has a tray ceiling, large walk in closet & luxury bath. There are 3 additional bedrooms, hall bath & loft. The full basement is finished with a rec room, play area, storage and is plumbed for laundry with a utility sink. Within walking distance of Wheaton Academy. Meticulously maintained & improved with newer roof, gutters, HVAC and HWH.



- Stroll, bike or run to the Prairie Path & Forest Preserve
- Airhart quality build
- 4 Bedrooms / 2.5 Baths
- Main Level Office
- Main Level Mudroom with Laundry
- Finished Basement
- Party Size Deck
- Generous Backyard



AGENT INFORMATION

Beth Lindner
M: 630.501.5251
License # 471.001603
bethlindner@fathomrealty.com
www.bethlindner.com

State Broker, Fathom Realty IL
0N371 Papworth St
Wheaton, IL 60187

ABOUT BETH LINDNER

I'm still in my sweet spot in my 24th year full time in real estate. I'm curious, tenacious, hard working, competitive (I detest losing!) and most content when juggling many balls! I opened the first IL office for Fathom Realty in January 2014. Being offered the ability to create the kind of real estate office I've always wanted to work at a brokerage with top producing agents who's integrit...

□

□

Disclaimer: All information deemed reliable but not guaranteed.