

# 11723 N DESERT HOLLY DRIVE

TUCSON, AZ 85737 | MLS #: 21717395

**\$430,000** | 5 BEDS | 3 BATHROOMS | 2,930 SQUARE FEET

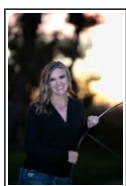


View Online: <http://11723desertholly.homeis4sale.com>  
For Instant Photos: Text 352010 To 415-877-1411

Outstanding Home with contemporary interior palette, crown moulding in living room, window blinds, plush carpet, ceiling fans, and beautiful tile floors. Spacious open floor plan features center kitchen island, breakfast bar, black appliances, built-in desk area, stylish counters, pantry, and wood cabinetry. Charming corner fireplace in family room. 5 Generous size bedrooms, 3 baths with one a Jack & Jill bath, and ample closets. Grand master retreat boasts patio access and private en suite. Gorgeous backyard with covered paved patio nestled on a view lot. Enjoy the built-in BBQ, decorative fountain, and breathtaking views.



- LOW CARE LANDSCAPE
- FAMILY RM FIREPLACE
- MOUNTAIN VIEWS
- CARPET & TILE FLOORING
- BREAKFAST BAR
- COVERED PATIO



## AGENT INFORMATION

**Angela M Kuzma, SFR, SRES**

P: (520) 225-0020

Angie@KuzmaGroup.com

[www.kuzmagroup.com](http://www.kuzmagroup.com)

**Keller Williams Southern Arizona**

5931 N. Oracle Rd., Suite 201

Tucson, AZ 85704



□

□

Disclaimer: All information deemed reliable but not guaranteed.