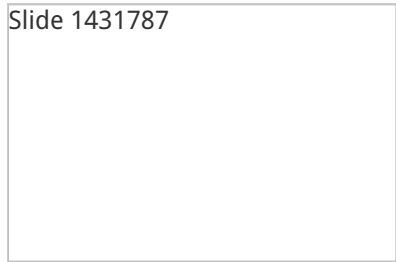
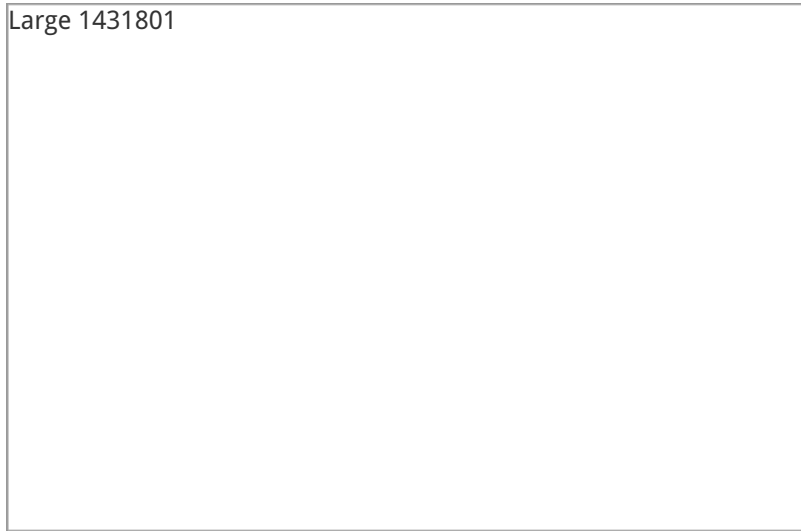


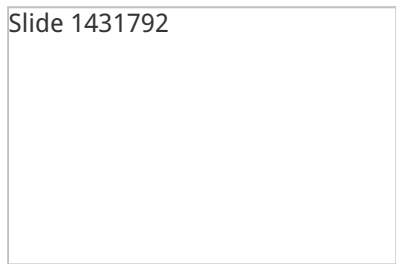
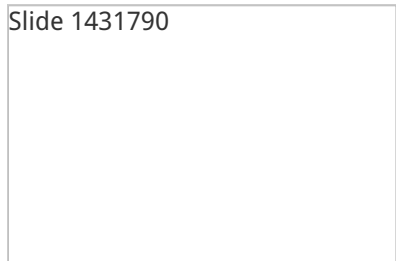
633 ELK CLOVER CIRCLE

PALM DESERT, CA 92211 | MLS #: 215030142

\$929,000 | 3 BEDS | 3.5 BATHROOMS | 2 CAR GARAGE + GOLF CART GARAGE | 3,513 SQUARE FEET



View Online: <http://www.633elkclover.com>
For Instant Photos: Text 812281 To 415-877-1411



West facing gorgeous furnished Pool/Spa Ocotillo 3 model. You will LOVE the private views from your spacious patio with the trickling waterfall. The patio has a built-in BBQ, covered space, sunning space and dining space! Located on Arroyo # 1, this magnificent home has great upgrades, including a custom front door, beautiful fireplace surround, silhouette shades, electric awnings over the patio, built-in glass shelving in niches, contemporary lighting throughout, custom built-in in the master, contemporary fans, limestone, granite and more! This model has the spacious 2-car garage with storage space and golf cart garage. Located on a great interior cul-de-sac, near the club, this home is ready for you today!

- West-Facing Pool/Spa Ocotillo 3 Model!
- You Will LOVE the Private Views from Spacious Patio!
- Offered Furnished ~ Ready Now for Your Season
- Great Upgrades ~ Custom Front Door, Beautiful Fireplace Surround...
- ...Silhouette Shades, Electric Awnings on Patio...
- ...Built-in Glass Niche Shelving, Contemporary Lighting, Limestone & Granite...and MORE!
- Spacious 2-Car Garage ~ Storage Space & Golf Cart Garage
- Located on Interior Cul-de-Sac ~ Near the Club



AGENT INFORMATION



The Munselle Group
P: 760-772-2411
M: 760-409-4560
License # 01260226/01260339
info@themunsellegroup.com
www.themunsellegroup.com

HK Lane Real Estate/ Christie's International
72895 Fred Waring Drive
Palm Desert, CA 92260



Disclaimer: All information deemed reliable but not guaranteed.