

# 265 MINERVA STREET

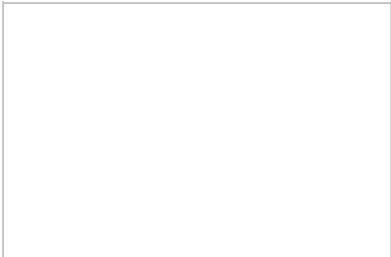
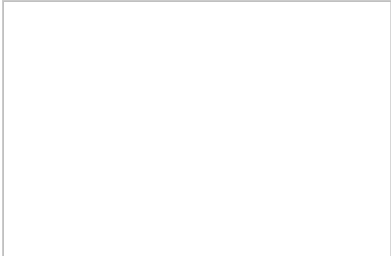
SAN FRANCISCO, CA 94112 | MLS #: 436679

**\$699,999** | 2 BEDS | 1 BATHROOMS | 1 CAR PARKING | 967 SQUARE FEET

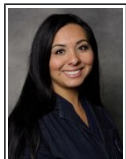


View Online: <http://265minerva.homeis4sale.com>  
For Instant Photos: Text 559789 To 415-877-1411

Lovely two bedroom one bath home. First time on the market in 50+ years. Family room with permits and is not included in square footage . Huge backyard and patio with expansion possibilities. Close to San Francisco State University, Bart, Muni and Lake Merced. Quick walk to newly renovated Minnie and Lovie Ward Recreational Center and park. Must See!



- Great Location
- Original Features
- Gated Entry
- Large Yard
- Must See!



## AGENT INFORMATION

**Cathy Robles**  
P: 650-291-1158  
License # 01720942  
[cathy@alehomes.com](mailto:cathy@alehomes.com)  
[www.alehomes.com](http://www.alehomes.com)



**American Lighthouse Estates, Inc.**  
524 Union Street #374  
San Francisco, California 94133



## FINANCING QUESTIONS:

**Daniel Pryce**  
M: 415-902-8989  
License # 282924  
[daniel.pryce@wjbradley.com](mailto:daniel.pryce@wjbradley.com)  
[mywjb.com/daniel-pryce/](http://mywjb.com/daniel-pryce/)

**W.J. Bradley Mortgage Capital**  
1300 S. El Camino Real, Suite 505  
San Mateo, CA 94402

□ □

Disclaimer: All information deemed reliable but not guaranteed.