

5175 PINE VALLEY DRIVE

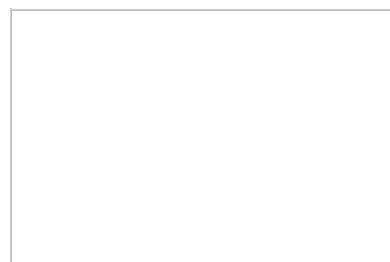
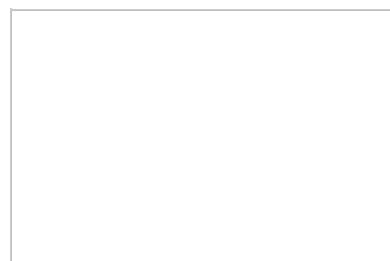
PLEASANT HILL, IA 50327 | MLS #: 429520

\$170,000 | 3 BEDS | 2 BATHROOMS | 1635 SQUARE FEET

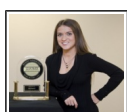


View Online: <http://sheenasells.homeis4sale.com>
For Instant Photos: Text 505408 To 415-877-1411

Step into this beautiful walkout ranch home in heart of Pleasant Hill with 1635 sq. ft. finished. You'll notice the extra parking slab, tasteful landscaping and steps to the back of the home... already set up to start your own in home business! Entering through the door, you'll feel at home with the warm paint selections and new carpet. The main level features 3 bedrooms, 1 bath, main level laundry, and kitchen with wood floors and ample cabinet space. You'll love sitting outside on the over sized deck and enjoying watching the kids play. The lower level is finished and boasts a huge family room, non-conforming 4th bedroom /office , beautiful bathroom with modern flair, walkout to a patio, and plenty of storage! Mature trees along the back and over sized lot so no neighbors on top of you! Don't let this one pass you bye! Call to schedule your appointment today

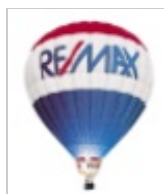


- New Carpet
- Laundry on the main level
- Wood floors
- Oversized deck
- Office
- Oversized lot
- Walk out basement
- Attached garage



AGENT INFORMATION

Sheena Cochran- Foster
P: 515-265-7200
M: 515-401-8398
sheena@sheenacochranfoster.com
www.SheenaCochranFoster.com



RE/MAX Real Estate Group
932 N Shadyview Blvd
Pleasant Hill, IA 50327



FINANCING QUESTIONS:

Luke Landis
P: 515-491-9161
License # NMLS 32580 Licensed by the Department of Business Oversight under the CRMLA
luke.landis@fpfmail.com
iowamortgageman.com

First Priority Financial
245 Venture Dr
Waukee, IA 50263

□ □

Disclaimer: All information deemed reliable but not guaranteed.