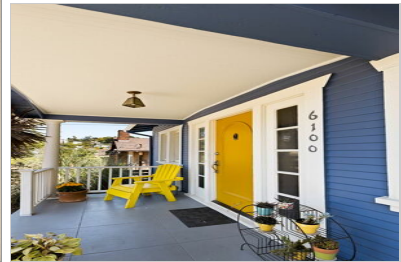


6100 ROY ST

HIGHLAND PARK, CA 90042 | MLS #: AR26101987

\$1,295,000 | 3 BEDS | 2 BATHROOMS | 2 CAR PARKING | 1378 SQUARE FEET



View Online: <http://www.mysinglepropertywebsites.com/123374>
For Instant Photos: Text 353943 To 415-877-1411

Quintessentially Highland Park! 6100 Roy St is the perfect example of the best of Highland Park living! This sweet, sun-filled 2-bed, 1-bath 1920s Craftsman, plus a totally revamped ADU will speak to your heart from the moment you enter the lush front walkway and up to the lovely front shade porch! Once inside, you'll be instantly met with joyful energy and a tasteful blend of vintage charm and modern-day functionality! Original hardwood floors, wood windows, 1920's built-in shelving, a functional O'Keefe and Merritt stove, and a cozy decorative fireplace create a soulful connection to the past while a new roof, copper plumbing, newer electrical and central HVAC offer peace of mind with modern systems. The easy breezy layout maximizes space beautifully! Two spacious bedrooms and one classic central bath with a timeless clawfoot tub are perfectly situated. The tastefully updated kitchen leaves nothing to be desired and offers an abundance of storage! Outside in ...

- Charming Craftsman
- Covered front porch
- Original hardwood floors
- Original built-ins
- Functional O'Keefe and Merritt stove
- Remodeled bath with claw foot tub
- Permitted ADU
- Backyard with patio and lush landscaping



AGENT INFORMATION

Jessica L. Romero
P: 626-414-7464
License # DRE: 01920921
jessicalromero@kw.com
jessicalromero.com/



Keller Williams Realty, DRE#
01444805
199 S Los Robles Ave #130
Pasadena, CA 91101

ABOUT JESSICA L. ROMERO

Jessica's area of expertise is not only assisting local buyers and sellers with meeting their real estate goals efficiently and without hassle, but also in providing data-driven assessments of value for a wide array of properties.

From fixers to investments to high end, re...

Disclaimer: All information deemed reliable but not guaranteed.