

14307 LAWNES CREEK CROSSING

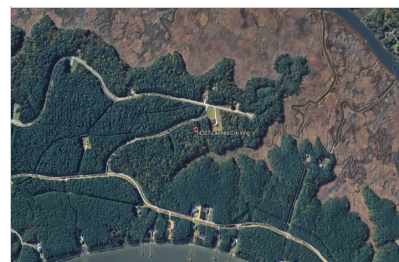
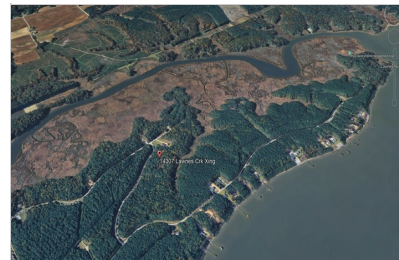
SMITHFIELD, VA 23430 | MLS #: 10619155

\$125,000 | 5 ACRES SQUARE FEET



View Online: <http://www.viewlisting.info/123198>
For Instant Photos: Text 685061 To 415-877-1411

Level and wooded home site ready to build on. The land is packed with deer, turkey and more. Lawnes Point is an upscale waterfront community bordered by Lawnes creek to the west and the mighty James River on the east. Five acres of land provides the ample privacy you want but on paved roads with public utilities. Ten minutes from historic downtown Smithfield with it's quaint shops and restaurants along the brick sidewalks and old fashioned street lights. Perfect location to raise a family or enjoy your retirement. Neighborhood building specifications available upon request.



- Level building area
- Wooded Homesite
- Paved Road
- Public water and sewer
- Lots of privacy
- Wildlife Galore



AGENT INFORMATION

Jon May
M: 757-356-1226
License # 0225181649
jmay@fathomrealty.com
jonmay.fathomrealty.com



Fathom Realty
11815 Fountain Way
Newport News, VA 23606

ABOUT JON MAY

Full time since 1992, it continues to be a great pleasure to have a small part in my clients lives. It is an honor to assist my clients in moving to the next season of their lives by selling their home at the highest possible price in the shortest amount of time. It is a privilege to share in a first time home buyers dreams and goals or help a growing family find a larger home. The majori...

□

□

Disclaimer: All information deemed reliable but not guaranteed.