

SCOTTSFIELD DRIVE

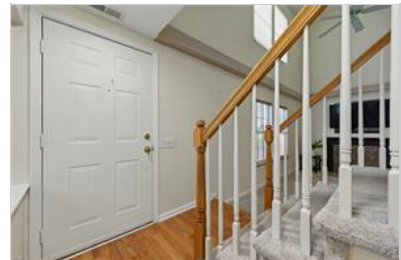
SUFFOLK, VA 23435 | MLS #: 10584455

\$349,900 | 3 BEDS | 2.5 BATHROOMS | 4 CAR PARKING | 2249 SQUARE FEET



View Online: <http://www.viewlisting.info/122752>
For Instant Photos: Text 392793 To 415-877-1411

Location, Location, Location! Renovated & move-in ready! This spacious home features fresh paint, cathedral ceilings, & a bright, open layout. The large eat-in kitchen includes granite countertops, tile backsplash, & updated appliances. The expansive great room flows into the formal dining area & a beautiful sunroom filled with natural light-perfect for relaxing or entertaining. The primary suite offers a walk-in closet, private bath and sitting room with fireplace. The sitting room has potential to be enclosed to a 4th bedroom. WOW! Enjoy the fenced backyard with a hot tub and plenty of space to unwind. 2-car garage, updated systems, & more! Ask about the possible 2.25% assumable VA loan-buyer must qualify! This home is a prime location, close proximity to schools, VDOT building, College drive shopping center and popular food chain restaurants. Don't wait to schedule your showing, this one won't last!!!



- Fresh paint
- Cathedral Ceilings
- Open layout
- Sitting room has potential to be enclosed a 4th bedroom
- Large 2 car garage
- Two fireplaces
- Fence back yard with hot tun
- Prime location, close proximity to schools, VDOT building, College drive shopping center and popular food chain restaurants



AGENT INFORMATION

Connie Bowe
P: 757-777-4322
M: 757-777-4322
License # 0225186385
cbowe@fathomrealty.com
Connie-Bowe.fathomrealty.com/



Fathom Realty
11815 Fountain Way #300
Newport News, Va 23606

ABOUT CONNIE BOWE

□ □ Disclaimer: All information deemed reliable but not guaranteed.