

# 20639 CREEKSIDE DRIVE

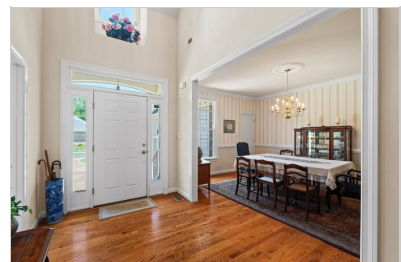
SMITHFIELD, VA 23430 | MLS #: 10580883

**\$650,000** | 4 BEDS | 3.5 BATHROOMS | 2 CAR PARKING | 3583 SQUARE FEET



View Online: <http://www.viewlisting.info/122692>  
For Instant Photos: Text 136222 To 415-877-1411

You are going to love the classic architecture of this traditional cape cod with a surprisingly transitional floorplan. Beautiful hardwood floors in the foyer and dining room which has a closet just for serving dishes. The large useable family room includes a gas log fireplace flanked by built in shelves and cabinets. The kitchen is huge. An incredible amount of cabinets for storage and countertop space that goes on forever. The first floor primary bedroom has a tray ceiling, generous closet space and a five piece bath with ceramic tile. Upstairs is another primary bedroom, plus two that share a hall bath. A separate staircase brings you to the FROG which is used as an office with craft room space. Storage galore.



- First floor primary bedroom
- Huge kitchen with island
- Screened porch
- Hardwood Floors
- office space and craft room over garage
- Courtyard entrance driveway
- Storage Galore
- Sasser Built



## AGENT INFORMATION

**Jon May**  
M: 757-356-1226  
License # 0225181649  
jmay@fathomrealty.com  
jonmay.fathomrealty.com



**Fathom Realty**  
11815 Fountain Way  
Newport News, VA 23606

## ABOUT JON MAY

Full time since 1992, it continues to be a great pleasure to have a small part in my clients lives. It is an honor to assist my clients in moving to the next season of their lives by selling their home at the highest possible price in the shortest amount of time. It is a privilege to share in a first time home buyers dreams and goals or help a growing family find a larger home. The majori...

□ □ Disclaimer: All information deemed reliable but not guaranteed.