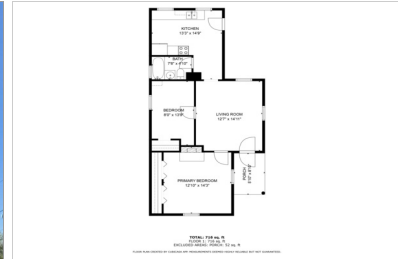


# 430 MONTANA AVE

LOUISVILLE, KY 40208 | MLS #: 1684551

\$125,000 | 2 BEDS | 1 BATHROOMS | 1 CAR PARKING | 786 SQUARE FEET



View Online: <http://www.viewlisting.info/122671>  
For Instant Photos: Text 182818 To 415-877-1411

Located just a short walk from the University of Louisville, this freshly updated home is ideal for students, faculty, or savvy investors. Features include soaring 10-foot ceilings, fresh interior paint, and durable luxury vinyl tile flooring. The kitchen and bathroom were thoughtfully remodeled several years ago, offering modern convenience with timeless charm. Enjoy a fully fenced backyard, perfect for pets or entertaining, along with off-street parking for added convenience and easy to maintain vinyl siding. This property sits in a consistently high-demand rental area—don't miss your chance to add a solid performer to your portfolio!



- Close to UofL
- Great Rental Potential
- Freshly Painted
- Luxury Vinyl Floors
- Fully Fenced backyard
- Off-street Parking space



## AGENT INFORMATION

**Bowin Tichenor**  
P: 5024244955  
M: 5024244955  
License # 252686  
[btichenor@fathomrealty.com](mailto:btichenor@fathomrealty.com)  
<https://bowin-tichenor.fathomrealty.com/>



**Fathom Realty**  
4604 Miller Glen Pl  
Smithfield, KY 40068

Disclaimer: All information deemed reliable but not guaranteed.