

# 343 HAWTHORN DRIVE

LOVELAND, CO 80538

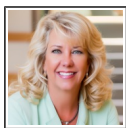
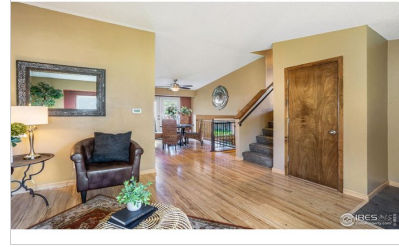
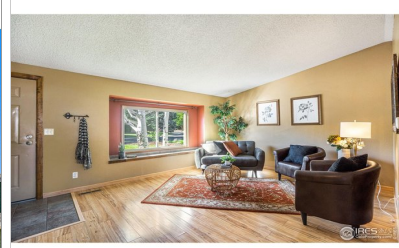
\$525,000.00 | 4 BEDS | 2 BATHROOMS | 2 CAR GARAGE | 1526 SQUARE FEET



View Online: <http://www.viewlisting.info/122332>  
For Instant Photos: Text 924520 To 415-877-1411

Prepare to be amazed by this stunning tri-level home in central Loveland! Located within a short walking distance to shopping and restaurants, just half a mile from Lake Loveland, and only a mile from McKee Medical Center, this home offers convenience and charm. Featuring four bedrooms, two bathrooms, two spacious living areas, and a large fenced yard, it has everything you've been searching for. Inside, you'll discover granite countertops in the kitchen and bathrooms, stainless steel appliances, and updated flooring. Outside, enjoy the maintenance-free deck with a pergola, a newer roof, a large garden area, and a massive fenced yard with no neighbors behind you. This is the perfect home for you!

- Perfect Central Loveland Location! Close to Lake Loveland and McKee Medical Center
- Spacious and Open with Vaulted Ceilings
- 4 bedrooms
- 2 baths
- Updated flooring
- New light fixtures
- Huge fenced yard
- Inviting Deck with Pergola



## AGENT INFORMATION

**Rose Lanter**  
P: (970) 515-7880  
M: (970) 213-8467  
rlanter@fathomrealty.com  
www.transitionshomes.com



**Transitions Homes Team at Fathom Realty**  
4103 Lissa Drive  
Loveland, Colorado 80537

## ABOUT ROSE LANTER

Rose Lanter has been a licensed real estate broker in Colorado since 1989. Rose prides herself on treating all of her clients like family!

□

□

Disclaimer: All information deemed reliable but not guaranteed.