

2661 S SULLEY DR 110

GILBERT, AZ 85295 | MLS #: 6681913

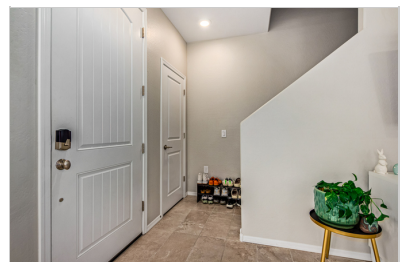
\$489,900 | 3 BEDS | 2.5 BATHROOMS | 2 GARAGE SPACES | 1,921 SQUARE FEET



View Online: <http://2661sulle110.homeis4sale.com>
For Instant Photos: Text 164268 To 415-877-1411

Like New! Stunning corner unit in the Towns at Anney! This home includes 3 bedrooms plus a loft and 2 1/2 bathrooms with a 2-car garage as well as parking immediately adjacent for convenient guest parking. The interior boasts upgraded tile flooring, white cabinetry with gorgeous brushed gold hardware, stainless appliances, kitchen island, walk-in pantry, large great room with lots of windows and beautiful views to the greenbelts and landscaping. Upstairs includes 3 bdrms plus a loft. The large mstr bdrm includes dual vanities and a spacious walk-in closet. Enjoy the front courtyard, or one of the 3 community pools and spas, or stroll the numerous lush community parks and waterways with walking paths throughout! And no car needed for nearby SanTan Village and shopping! This one's a 10!!!

- Wood-look Flooring
- SS Appliances
- Community Pool
- Dual Pane Windows



AGENT INFORMATION

Kerry Jackson
P: 480-227-4710
License # BR549772000
kerryjacksonteam@gmail.com
www.kerryjacksonteam.com



Grace Realty Group
2883 E Santa Fe Lane
Gilbert, AZ 85297

□

□

Disclaimer: All information deemed reliable but not guaranteed.