

# 44308 W DESERT PLANT TRL

MARICOPA, AZ 85139 | MLS #: 6667636

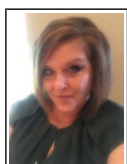
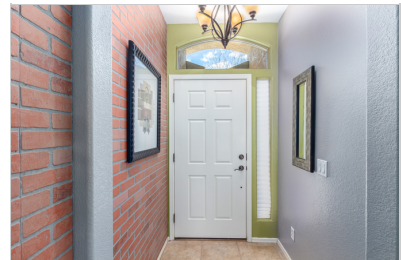
**\$379,900** | 3 BEDS | 2 BATHROOMS | 2 GARAGE SPACES | 1,549 SQUARE FEET



View Online: <http://44308desertplant.homeis4sale.com>  
For Instant Photos: Text 491602 To 415-877-1411

The search is over! New AC, New Paint, Newer Appliances! This delightful 3-bed, 2-bath residence features a 2-car garage, tasteful stone accents, and a low-maintenance desert landscape. Discover a spacious great room with high ceilings, a neutral palette, wood-look flooring, and sliding doors leading to the backyard for seamless indoor-outdoor living. The kitchen is equipped with ample wood cabinetry with crown moulding, sleek stainless steel appliances, recessed lighting, a handy pantry, and a two-tier island with a breakfast bar for morning coffee. The main bedroom is complete with a cozy sitting nook, a walk-in closet, and an ensuite with dual sinks. Outside, the backyard offers a covered patio and a firepit surrounded by sitting areas for relaxing evenings under the stars. See it now!

- New A/C
- High Ceilings
- Stainless Steel Appliances
- Recessed Lighting



## AGENT INFORMATION

**Kelli McIntosh**  
P: (480) 225-8253  
License # SA637845000  
KelliDMcintosh@gmail.com



**At Home**  
36108 N Murray Grey Dr  
San Tan Valley, AZ 85143

Disclaimer: All information deemed reliable but not guaranteed.