

14 MIDDLESEX DRIVE

WILTON MANORS, FLORIDA 33305 | MLS #: F10413256

\$648,900 | 2 BEDS | 1.5 BATHROOMS | 2 CAR PARKING | 1300 SQUARE FEET

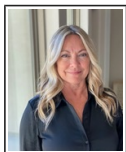


View Online: <http://www.viewlisting.info/118708>
For Instant Photos: Text 112917 To 415-877-1411

STUNNING ARCHITECTURALLY DESIGNED RIVERFRONT HOME - Originally a 2bdrm - now a gorgeously redesigned large 1bdrm w/ensuite!! 2nd Bdrm is currently a part of an expanded main suite with office and luxurious bath. Office area could serve as 2nd open-spaced bdrm. Main suite can be converted back to a 2 bdrm. Welcome home to a secret garden gem in Townhouse Isle on the Middle River! On a quiet, tucked away, cul-de-sac, this renovated and professionally designed townhome was in two Florida magazines; enter your private courtyard to an exquisitely designed oasis. Enjoy an open great room downstairs with a Murphy bed in the dining area for extra sleeping space; high end appliances in the kitchen w/2 sinks, 2-drawer dishwasher, and a large stand alone ice maker for all the parties! Ascend the floating stairs to your main suite and office area with professionally designed closets and bath suite ~ Walk right through your front door to you...



- Architecturally Professionally Designed Riverfront Townhome
- Riverfront River View
- Private Front Courtyard
- Private Covered Back Patio
- Lava Tile Throughout & In Front Courtyard
- High End Appliances
- Washer/Dryer Included
- Cul-de-sac



AGENT INFORMATION

Angela Nunez
P: 210-639-7716
M: 210.639.7716
License # 3297750 FL/628297 TX
anunez@fathomrealty.com
angelanunez.fathomrealty.com

Fathom Realty
300 SW 1st Avenue Suite 155
Fort Lauderdale, FL 33301

ABOUT ANGELA NUNEZ

It's time for integrity and honesty to supercede cutting corners; it's time for trust to supercede doubt; and, it's time for a real estate agent to put the client first. I am here to bring you integrity, honesty, and trust in serving all of your real estate needs.

Disclaimer: All information deemed reliable but not guaranteed.