

316 PINE BEND DRIVE

WILDWOOD, MISSOURI 63005 | MLS #: 23044565

\$1,100,000 | 5 BEDS | 4.5 BATHROOMS | 3 CAR PARKING |

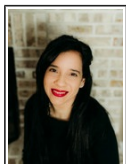


View Online: <http://www.viewlisting.info/115618>
For Instant Photos: Text 928245 To 415-877-1411

Impressive! This exquisite 1.5-story home boasts over 6,200 square feet of living space, including a finished lower-level walk-out. As you enter the home, you are greeted by a stunning two-story foyer adorned with marble floors, a formal dining room featuring crown molding, and an executive home office. The dramatic great room showcases a fireplace, a wall of windows with soaring 20-foot-high ceilings overlooking lush woods, a wet bar, and a wine cooler. The primary bedroom, laundry, and kitchen area are conveniently located on the main level.

The kitchen has white 42" custom cabinets, a 5-burner gas cooktop, a center island, double ovens, granite countertops, stainless steel appliances, and a glass backsplash. The spacious breakfast room and pantry add to the convenience and functionality of the kitchen. Relax and enjoy the breathtaking views of the lush landscape and trees from the sunroom. The kitchen also offers ample space for a dining table, creatin...

- Over 6,200 square feet of living space.
- The dramatic great room showcases a fireplace, a wall of windows with soaring 20-foot-high ceilings overlooking lush woods.
- The primary bedroom, laundry, and kitchen area are all conveniently located on the main level.
- Newly renovated entertainment area. Equipped with a dishwasher, a refrigerator, and a generously sized sitting bar, providing an ideal setting for entertaining guests.
- The kitchen has white 42" custom cabinets, a 5-burner gas cooktop, a center island, double ovens, granite countertops, stainless steel appliances,
- Relax and enjoy the breathtaking views of the lush landscape and trees from the sunroom.
- Five Bedrooms and 5 Bathrooms (4, 1.5)
- The upper level offers a large bonus room.



AGENT INFORMATION

Angela Chmielewski
P: 888-455-6040 office
M: 314-527-2629
License # 2021003300
angelafathomre@gmail.com
angelachmielewski.agent-pro.me/



Fathom Realty
18336 Edison Ave., #300
Chesterfield, MO 63005

ABOUT ANGELA CHMIELEWSKI

My husband and I are St. Louis area real estate agents who love to work with both home buyers and home sellers. We are both graduates of the University of Dayton School of Law, and our passion for real estate was inspired by Real Property law. We know the unique aspects that the St. Louis area provides, and we combine our background and knowledge in our service to our clients. <...

□ □ Disclaimer: All information deemed reliable but not guaranteed.