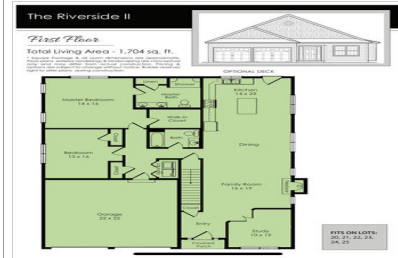
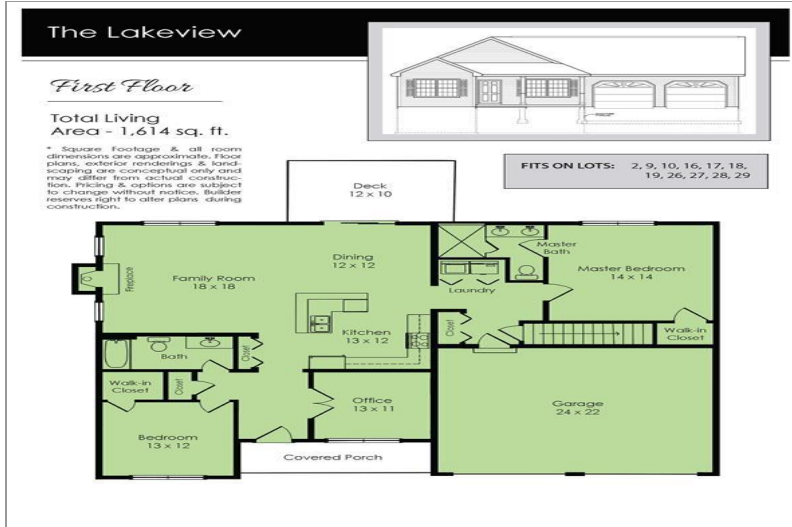


BEAVER BROOK ESTATES

PELHAM, NH 03076

\$589,900+ | 2 BEDS | 2.5 BATHROOMS | 2 CAR GARAGE | 1,467+ SQUARE FEET



View Online: <http://www.beaverbrookestates.com>
 For Instant Photos: Text 711389 To 415-877-1411

Welcome to Beaver Brook Estates, a private, beautiful, country 12-acre setting touting this Age Restricted 62+ Community, boasts 29 single-family detached homes, in an incredible Pelham location on the Windham line. 5 Floorplans to choose from, 1425 SF - 1960SF - Ranch Styles and two-story floorplans, Clubhouse, hardwood floors, cathedral ceilings, Central A/C, 2 stall garage for all house plans, abutting babbling Beaver Brook. Low condo fee expected \$275 a month. Pennichuck water. Don't miss out, prices starting at \$589,900. Reserve your lot today and become one of the proud owners of Beaver Brook Estates. These units are selling fast! GPS 1431 Mammoth Rd, Pelham, NH

GPS 1431 Mammoth Rd, Pelham, NH ***PHOTO IS A FACSIMILE.

- Age Restricted 62+
- HOA Maintains Landscape
- Clubhouse
- Great Walking Community
- 2 Car Garages
- 1st Floor Master Bedroom or Ranch Style



AGENT INFORMATION

Madison Pyburn
 M: 978-270-5333
 License # 9520874 & 069026
 madison.pyburn@verani.com
<https://www.verani.com/agent/1331146-blaise-coco/>



Berkshire Hathaway Verani
 56 Main St
 Salem, NH 03079

Disclaimer: All information deemed reliable but not guaranteed.