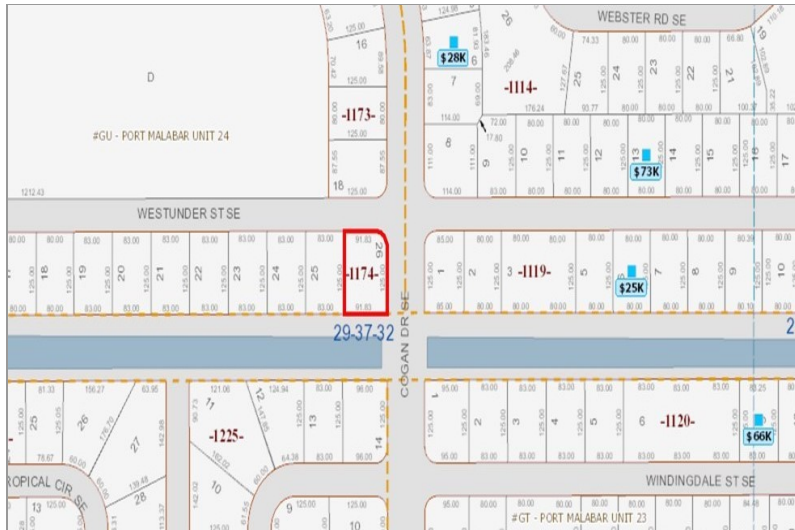


# 1096 WESTUNDER ST. SE

PALM BAY, FL 32909

**\$31,000.** | .26 ACRE LOT |



View Online: <http://www.mysinglepropertywebsites.com/102692>

For Instant Photos: Text 526405 To 415-877-1411

Call Lynn Now 321-427-6788! 1096 Westunder St. SE. SE Palm Bay, FL 32909 - Well Water, Septic .26 acre corner lot . NO HOA!

[Click here for MLS Sheet](#)

Visit: <http://www.BurleyProperties.com/> for more details & Broker contact information. Lynn has several other properties as well! Call Lynn today 321-427-6788!

- Buildable!
- .26 Acre Lot



## AGENT INFORMATION

**Lynn C. Burley**  
M: 321-427-6788  
[lynn@burleyproperties.com](mailto:lynn@burleyproperties.com)  
[www.BurleyProperties.com](http://www.BurleyProperties.com)  
**Burley Properties**

## ABOUT LYNN C. BURLEY

**LYNN C. BURLEY IS THE BROKER OF BURLEY PROPERTIES, A FULL SERVICE REAL ESTATE BROKERAGE SPECIALIZING IN TRADITIONAL, SHORT SALE & FORECLOSURE PROPERTIES.**  
**LYNN C. BURLEY IS THE BROKER OF BURLEY PROPERTIES, A FULL SERVICE REAL ESTATE BROKERAGE SPECIALIZING IN TRADITIONAL, SHORT SALE & FOR**



Disclaimer: All information deemed reliable but not guaranteed.