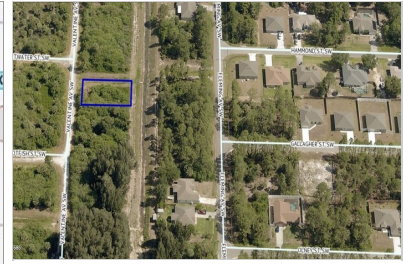


2565 VALENTINE AVE. SW

PALM BAY, FL 32908

\$22,000.00 | .24 ACRE LOT |



View Online: <http://2565valentineave.homeis4sale.com>

For Instant Photos: Text 115059 To 415-877-1411

Call Lynn Now for more properties 321-427-6788! 2565 Valentine Ave. SW Palm Bay, FL 32908 - Well Water, Septic .24 acre lot - NO HOA!

[Click here for MLS Sheet](#)

Visit: <http://www.BurleyProperties.com/> for more details & Broker contact information. Lynn has several other properties as well! Call Lynn today 321-427-6788!

- Buildable!
- .24 Acre Lot



AGENT INFORMATION

Lynn C. Burley
M: 321-427-6788
lynn@burleyproperties.com
www.BurleyProperties.com
Burley Properties

ABOUT LYNN C. BURLEY

LYNN C. BURLEY IS THE BROKER OF BURLEY PROPERTIES, A FULL SERVICE REAL ESTATE BROKERAGE SPECIALIZING IN TRADITIONAL, SHORT SALE & FORECLOSURE PROPERTIES.

LYNN C. BURLEY IS THE BROKER OF BURLEY PROPERTIES, A FULL SERVICE REAL ESTATE BROKERAGE SPECIALIZING IN TRADITIONAL, SHORT SALE & FOR