

# 13533 W COLTER ST

LITCHFIELD PARK, AZ 85340 | MLS #: 6691013

**\$849,900** | 5 BEDS | 4.5 BATHROOMS | 3 GARAGE SPACES | 4,592 SQUARE FEET

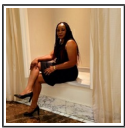


View Online: <http://13533colter.homeis4sale.com>  
For Instant Photos: Text 469505 To 415-877-1411

Prepare to be amazed! Come and see this fantastic 5 bed, 4.5 bath residence now on the market! Stunning curb appeal, easy care front yard w/mature palm trees, and a 3 car garage w/built-in cabinets are just the beginning! Discover a spacious living area and formal dining room w/soaring ceilings, elegant wood-look flooring, a warm fireplace, dazzling light fixtures, and crisp palette throughout. The sizeable family room boasts a 2nd fireplace and a wet bar, perfect for entertaining! The gourmet kitchen is worthy of a chef, offering ample cabinetry w/crown moulding & a wine rack, a pantry, granite counters, built-in appliances such as dual wall ovens, an island w/a breakfast bar, and a breakfast nook. Upstairs you'll find a loft where you can spend a relaxing Sunday afternoon!

Relax and unwind in the primary bedroom, boasting soft carpet, private balcony access, a walk-in closet, and a luxurious ensuite w/dual sinks. Don't forget about the cozy den, ideal for an office. F...

- Prime Location
- Wood-Floors
- Tall Ceilings
- Fireplace
- Crown Moulding



## AGENT INFORMATION

**Gladys Owuor**

P: 602-592-5954

License # SA708702000

Info@verandarealtyinvestments.com

gladystihowuor.myrealtyonegroup.com



**Realty ONE Group**

2950 N Litchfield Rd

Goodyear, AZ 85395

□

□

Disclaimer: All information deemed reliable but not guaranteed.