

3401 WALLINGFORD AVENUE N

SEATTLE, WA 98103

\$250,000 | 2 BEDS | 1 BATHROOMS | 1 CAR PARKING | 661 SQUARE FEET



View Online: <http://www.mysinglepropertywebsites.com/18500>

For Instant Photos: Text 163048 To 415-877-1411

Talk about location!

This two bedroom condo is located on the north end of Lake Union where Wallingford meets Gasworks Park & Fremont (aka Center of The Universe).

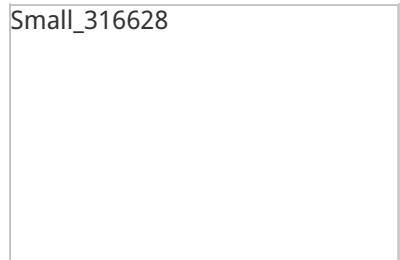
An efficient floor plan with a west facing balcony that spans the length of the unit (almost 15 feet).

Modern flair with espresso wood floors, designer tile and granite counters.

Condominium comes with parking, storage and laundry en-suite. There's a common area rooftop deck with incredible views!

Bicycle and pet friendly building - one block from Burke Gilman Trail.

Small_316628



- Storage unit
- Large balcony
- Laundry en-suite
- Great location
- Close to Burke Gilman Trail
- Pet friendly
- Bicycle friendly



AGENT INFORMATION

Blair Stacks

P: (206) 322-8711

M: (206) 478-7050

License # 94167

blairstacks@cbbain.com

www.BlairStacks.com

Coldwell Banker Bain

1661 East Olive Way

Seattle, WA 98102



Disclaimer: All information deemed reliable but not guaranteed.

ABOUT BLAIR STACKS

I am a Seattle based real estate broker since 2005. I am proud to provide exclusive representation for my clients and am very in touch with the Seattle Real Estate Market. My goal is to make the transaction as easy as possible while upholding the highest standards.