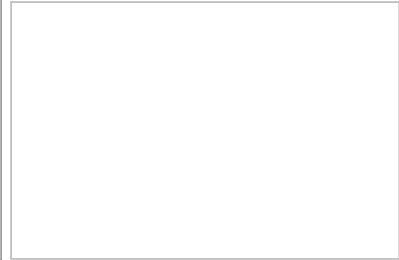
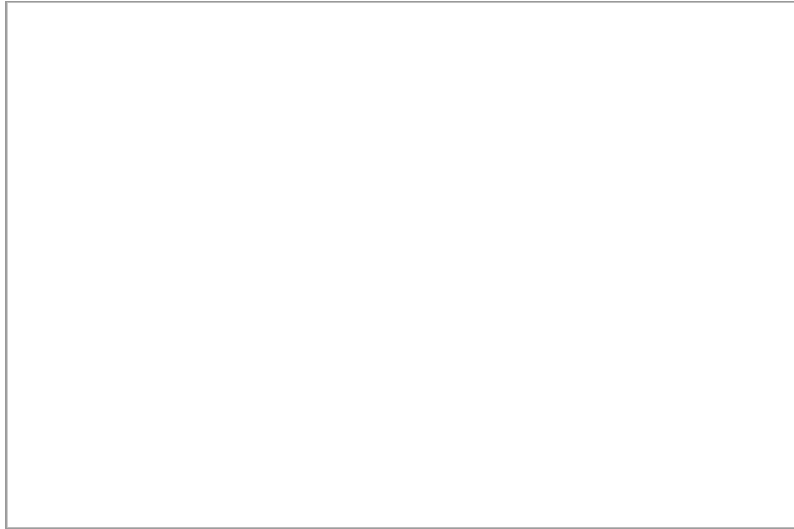


# 261 PARK LANE

CONCORD, MA 01742

**\$2,195,000** | 7 BEDS | 5.5 BATHROOMS | 6 CAR PARKING | 4,730 SQUARE FEET

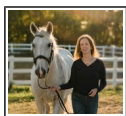
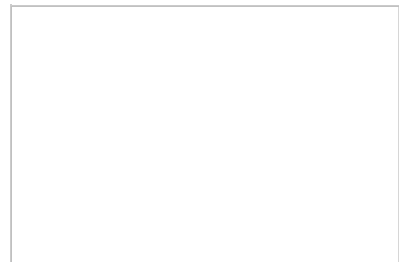
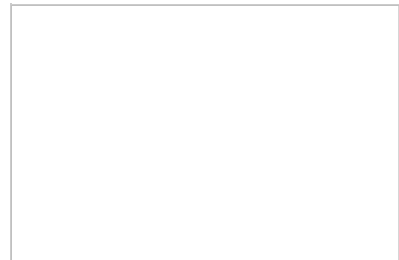


View Online: <http://www.mysinglepropertywebsites.com/3789>  
For Instant Photos: Text 3789 To 415-877-1411

Spectacular Riverfront! Custom, mid-century modern built with redwood, sits at the end of a cul-de-sac abutting conservation land. This secluded home, with expansive attached in-law wing, is beautifully sited on the banks of the river, with natural views from every room. The main portion of the house with radiant heat, offers an updated cook's kitchen with granite counters and professional gas stove. Living room with fireplace offers peaceful views of the river. First floor office/family room, laundry and half bath. The dining room/sunroom brings the outside in!

The second floor contains 5 bedrooms and 3 full baths. The first floor in-law wing also overlooks the river and has 2 bedrooms, 2 baths, laundry, kitchen and living room! Enjoy the heated, in-ground pool while relaxing and taking in the serene setting. Three car garage with heated storage and cedar closet. This property is conveniently located near historic Con...

- Riverfront property
- Inground heated pool
- Main house with 5 bedrooms
- Fully appointed In-law wing on first floor
- 3 car garage
- cul de sac location
- gourmet kitchen
- surrounded by conservation land



## AGENT INFORMATION

**GINETTE BROCKWAY**  
M: 978-621-4370  
License # 97655  
[ginette.brockway@verizon.net](mailto:ginette.brockway@verizon.net)  
[homesandhorses.com](http://homesandhorses.com)



**Keller Williams Realty**  
200 Baker Avenue  
Concord, MA 01742

## ABOUT GINETTE BROCKWAY

GINETTE BROCKWAY has been a leading Realtor since 1991. She specializes in residential properties ranging from condominiums to large horse farms and estates. She provides the finest resources in terms of market expertise and the latest technology to better serve her clients in a dynamic market.

□

□

Disclaimer: All information deemed reliable but not guaranteed.