

4163 E SILVERWOOD DR

PHOENIX, AZ 85048 | MLS #: 5604773

\$259,000 | 3 BEDS | 2 BATHROOMS | 1,443 SQUARE FEET



Large 1949842

Slide 1949822

Slide 1949810

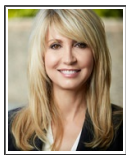
View Online: <http://4163silverwood.homeis4sale.com>
For Instant Photos: Text 536993 To 415-877-1411

Slide 1949896

Turn Key- Highly Upgraded! Kitchen remodeled in 2016 40" tall cabinets w sliding pull out drawers, under cabinet lighting, granite counter tops with full high backsplash, kitchen island, Updated Baths w/ granite, vanities and toilets, master has walk-in closet, newer tile and carpet throughout home in 2016, New Blinds and Vertical Louvers in 2016, 16 seer heat pump installed in 2016 w/10yr transferable parts and labor warranty, re-plumbed in 2017-no slab plumbing, patio cover replaced in 2015, Interior paint 2016, exterior paint 2014, 80 gallon water heater replaced in 2017. Central Vac, fireplace in family room. Located on a cul-de sac street.

Slide 1949823

- CARPET & TILE FLOORING
- GRANITE COUNTERTOPS
- N/S EXPOSURE
- WASHER & DRYER INCLUDED
- CEILING FANS
- BREAKFAST BAR.



AGENT INFORMATION

Sue Bentley
P: (480) 706-1600
M: (480) 766-3953
mls@suebentley.com
www.suebentley.com

ABOUT SUE BENTLEY

Initial content



Coldwell Banker Residential Brokerage
1110 E Missouri Ave Suite 850
Phoenix, AZ 85014

Disclaimer: All information deemed reliable but not guaranteed.